

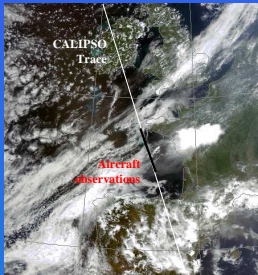
EFFECTS of ORIENTED ICE CRYSTALS on CALIPSO/CALIOP EXTINCTION COEFFICIENTS : COMPARISONS with AIRBORNE OBSERVATIONS in MID-LATITUDE CIRRUS CLOUDS during CIRCLE-2 EXPERIMENT



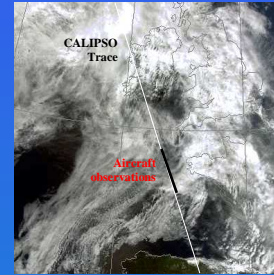
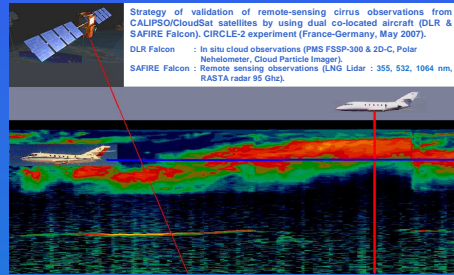
Jean - François Gayet⁽¹⁾, Guillaume Mioche⁽¹⁾, Damien Josset⁽²⁾, Jacques Pelon⁽²⁾, Anne Garnier⁽²⁾, Andreas Minikin⁽³⁾ and Alfons Schwarzenboeck⁽¹⁾



¹ LaMP UMR 6016 CNRS / Université Blaise Pascal, Aubière, France
² LATMOS UMR 8190 CNRS / Université Pierre et Marie Curie, Paris, France
³ Institut für Physik der Atmosphäre, DLR, Oberpfaffenhofen, Germany

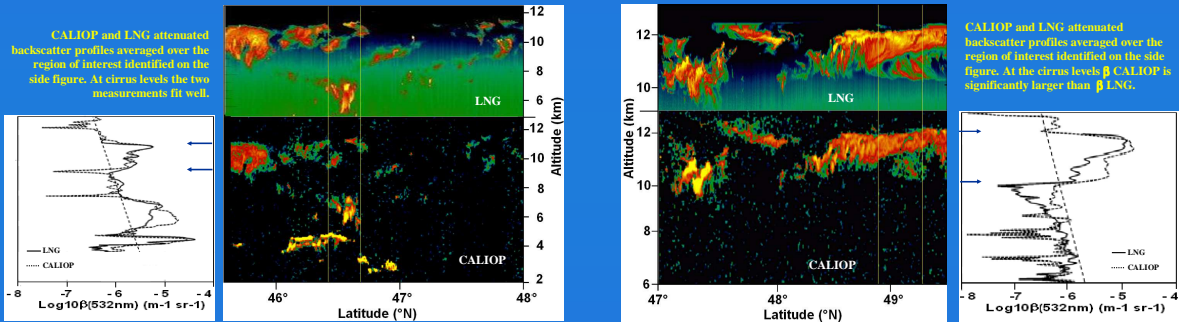


25 May 2007 (13:26 UT)

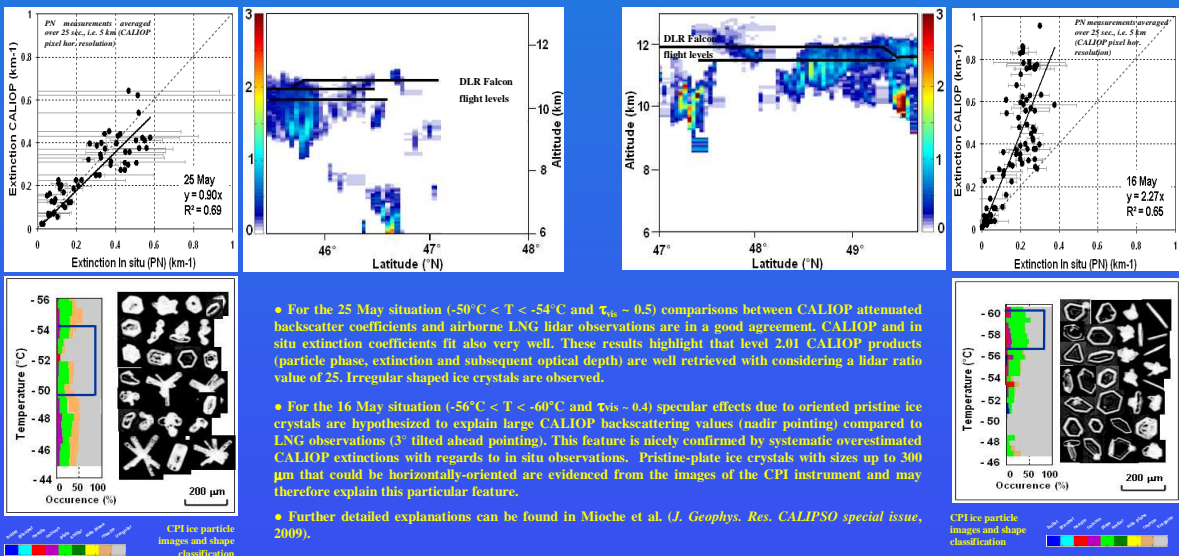


16 May 2007 (13:33 UT)

Comparisons between CALIOP and LNG attenuated backscatter coefficients



Comparisons between CALIOP (level 2.01) and in situ (Polar Nephelometer) extinction coefficients



Acknowledgements. This work was funded by CNES and a grant from CNRS/INSU. The contribution of DLR as well as large part of Falcon flight hours was funded in the framework of the DLR PAZI-2 project. Thanks are due to the members of DLR and SAFIRE who organized the experiment management and aircraft operations. We acknowledge NASA Langley Research Atmospheric Science Data Center, as well as ICARE Center in Lille for the CALIPSO data. We acknowledge C. Gourbeyre, and J-F Fournol (LaMP), B. Weinzierl and H. Riiba (DLR) for their active participation to the experiment.